



COMPASS

# Queens Luxury Report

July 07 - 13, 2025, Residential Contracts \$1.25M+

Photo: [11-20 Shore Road](#)

The Queens luxury real estate market, defined as all properties priced \$1.25M and above, saw 18 contracts signed this week, made up of 6 condos, and 12 houses. The previous week saw 18 deals. For more information or data, please reach out to a Compass agent.

**\$1,581,911**

Average Asking Price

**\$1,427,500**

Median Asking Price

**\$926**

Average PPSF

**1%**

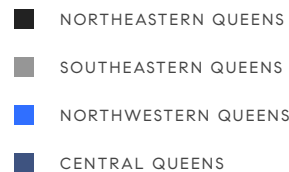
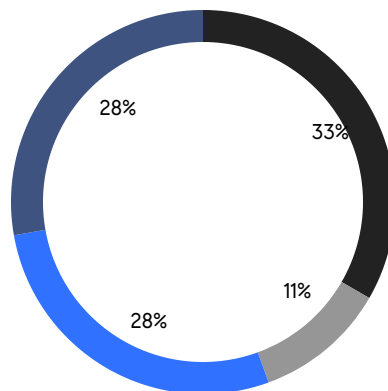
Average Discount

**\$28,474,388**

Total Volume

**99**

Average Days On Market

**6**

Condo Deal(s)

**0**

Co-op Deal(s)

**12**

Single-Family Deal(s)

**\$1,496,584**

Average Asking Price

**\$0**

Average Asking Price

**\$1,624,574**

Average Asking Price

**\$1,437,250**

Median Asking Price

**\$0**

Median Asking Price

**\$1,422,000**

Median Asking Price

**\$1,335**

Average PPSF

**\$702**

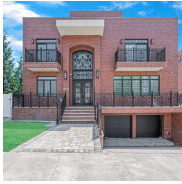
Average PPSF

**1,144**

Average SqFt

**2,621**

Average SqFt



### 233-12 Bay St

Douglaston

Contract Signed

Type	House	Price	\$2,980,000	Sq. Ft.	5,836	Beds	6
DOM	190	Initial	\$3,280,000	PPSF	\$511	Baths	7



### 86-05 Somerset St

Jamaica Estates

Contract Signed

Type	House	Price	\$2,350,000	Sq. Ft.	3,952	Beds	6
DOM	96	Initial	\$2,350,000	PPSF	\$595	Baths	3



### 3 Court Square, Unit 6210

Long Island City

Contract Signed

Type	Condo	Price	\$1,900,000	Sq. Ft.	972	Beds	2
DOM	-	Initial	\$1,900,000	PPSF	\$1,955	Baths	2



### 112-30 68th Ave

Forest Hills

Contract Signed

Type	House	Price	\$1,699,000	Sq. Ft.	4,400	Beds	5
DOM	63	Initial	\$1,699,000	PPSF	\$387	Baths	3



### 100-28 75th Ave

Forest Hills

Contract Signed

Type	House	Price	\$1,648,000	Sq. Ft.	1,860	Beds	4
DOM	46	Initial	\$1,648,000	PPSF	\$887	Baths	2.5



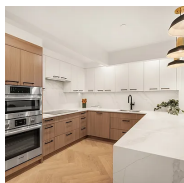
### 3 Middlemay Circle

Forest Hills

Contract Signed

Type	House	Price	\$1,549,000	Sq. Ft.	1,478	Beds	4
DOM	32	Initial	\$1,549,000	PPSF	\$1,049	Baths	2

Compass is a licensed real estate broker and abides by Equal Housing Opportunity laws. All material presented herein is intended for informational purposes only. Information is compiled from sources deemed reliable but is subject to errors, omissions, changes in price, condition, sale, or withdrawal without notice. No statement is made as to the accuracy of any description. All measurements and square footages are approximate. This is not intended to solicit property already listed. Nothing herein shall be construed as legal, accounting or other professional advice outside the realm of real estate brokerage.

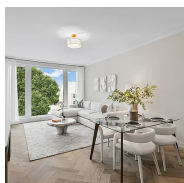


### 22-54 46th St, Unit 305

Astoria

Contract Signed

Type	Condo	Price	\$1,485,000	Sq. Ft.	1,409	Beds	3
DOM	425	Initial	\$1,650,000	PPSF	\$1,054	Baths	2

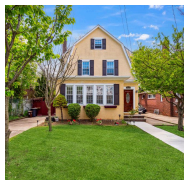


### 78-29 Austin St, Unit 509

Forest Hills

Contract Signed

Type	Condo	Price	\$1,475,500	Sq. Ft.	1,112	Beds	2
DOM	-	Initial	\$1,475,500	PPSF	\$1,327	Baths	2

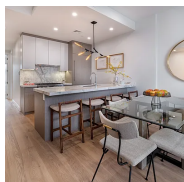


### 38-34 209th Street

Bayside

Contract Signed

Type	House	Price	\$1,456,000	Sq. Ft.	2,247	Beds	5
DOM	71	Initial	\$1,498,000	PPSF	\$648	Baths	3

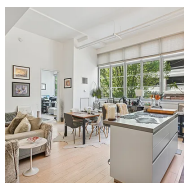


### 21-31 Shore Boulevard, Unit 3B

Astoria

Contract Signed

Type	Condo	Price	\$1,399,000	Sq. Ft.	1,163	Beds	2
DOM	211	Initial	\$1,399,000	PPSF	\$1,203	Baths	2



### 27-28 Thomson Ave, Unit 135

Long Island City

Contract Signed

Type	Condo	Price	\$1,395,000	Sq. Ft.	1,148	Beds	1
DOM	47	Initial	\$1,395,000	PPSF	\$1,216	Baths	2



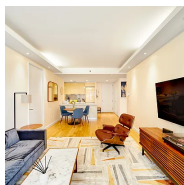
### 149-65 Hawthorne Avenue

Flushing

Contract Signed

Type	House	Price	\$1,388,000	Sq. Ft.	1,760	Beds	3
DOM	83	Initial	\$1,388,000	PPSF	\$789	Baths	2

Compass is a licensed real estate broker and abides by Equal Housing Opportunity laws. All material presented herein is intended for informational purposes only. Information is compiled from sources deemed reliable but is subject to errors, omissions, changes in price, condition, sale, or withdrawal without notice. No statement is made as to the accuracy of any description. All measurements and square footages are approximate. This is not intended to solicit property already listed. Nothing herein shall be construed as legal, accounting or other professional advice outside the realm of real estate brokerage.

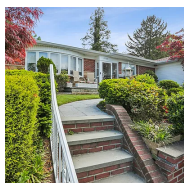


### 11-02 49th Ave, Unit 3C

Long Island City

Contract Signed

Type	Condo	Price	\$1,325,000	Sq. Ft.	1,060	Beds	2
DOM	39	Initial	\$1,325,000	PPSF	\$1,250	Baths	2

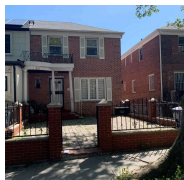


### 219-05 Stewart Road

Oakland Gardens

Contract Signed

Type	House	Price	\$1,299,000	Sq. Ft.	1,688	Beds	4
DOM	62	Initial	\$1,325,000	PPSF	\$770	Baths	2.5

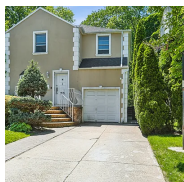


### 6503 110th St

Forest Hills

Contract Signed

Type	House	Price	\$1,298,888	Sq. Ft.	1,950	Beds	3
DOM	14	Initial	\$1,298,888	PPSF	\$667	Baths	3

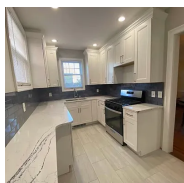


### 80-36 208th St

Oakland Gardens

Contract Signed

Type	House	Price	\$1,288,000	Sq. Ft.	1,620	Beds	3
DOM	38	Initial	\$1,288,000	PPSF	\$796	Baths	2



### 40-29 167th St

Auburndale

Contract Signed

Type	House	Price	\$1,270,000	Sq. Ft.	-	Beds	5
DOM	155	Initial	\$1,280,000	PPSF	-	Baths	3



### 89-10 189th St

Hollis

Contract Signed

Type	House	Price	\$1,269,000	Sq. Ft.	2,039	Beds	4
DOM	12	Initial	\$1,269,000	PPSF	\$623	Baths	3

Compass is a licensed real estate broker and abides by Equal Housing Opportunity laws. All material presented herein is intended for informational purposes only. Information is compiled from sources deemed reliable but is subject to errors, omissions, changes in price, condition, sale, or withdrawal without notice. No statement is made as to the accuracy of any description. All measurements and square footages are approximate. This is not intended to solicit property already listed. Nothing herein shall be construed as legal, accounting or other professional advice outside the realm of real estate brokerage.